

## **EN** LED spotlight with motion detector

theLeda S10 WH	1020921
theLeda S10 BK	1020922
theLeda S20 WH	1020923
theLeda S20 BK	1020924
theLeda S10 W WH	1020931
theLeda S10 W BK	1020932
theLeda S20 W WH	1020933
theLeda S20 W BK	1020934



## 1. Basic safety information 3

## 2. Proper use 3

### Disposal 3

## 3. Connection 4

## 4. Installation 5

### Installation instructions 5

## 5. Description 9

## 6. Aligning the LED spotlight 9

### Setting the brightness (LUX) 10

Setting the time (TIME)	10
Function mode (MODE)	10
Manual operation	11
<b>7. Walking test</b>	<b>12</b>
<b>8. Aligning the LED spotlight</b>	<b>13</b>
theLeda S10	13
theLeda S20	14
<b>9. Limiting the detection area</b>	<b>15</b>
<b>10. Technical Data</b>	<b>16</b>
<b>11. Contact</b>	<b>17</b>



# 1. Basic safety information



**WARNING**

**Danger of death through electric shock or fire!**

- Installation should only be carried out by a qualified electrician!



Only intended for installation out of arm's reach.



High temperature! Do not touch the metal parts of the device.

- ① The LED spotlight with motion detector (PIR) conforms to EN 60598-1 and EN 60669-2-1 if correctly installed
- ① IP 55 in accordance with EN 60529
- ① Optional with corner angle (9070969/9070987) and distance frame (9070971/9070988)

## 2. Proper use

- LED spotlight is used for lighting, depending on presence and brightness
  - Device is for wall mounting inside and outside
  - For entrances, garages, gardens, corridors, parks, etc.
  - For use in normal ambient conditions
- ① Lamp cannot be replaced.  
Replace entire spotlight if defective!

## Disposal

- Dispose of device in environmentally sound manner

## 3. Connection

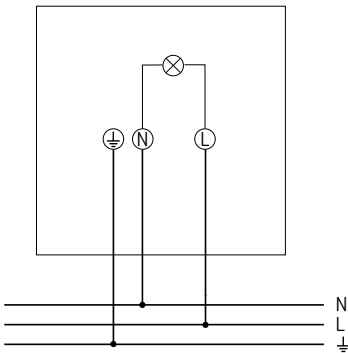


**WARNING**

**Danger of death through electric shock or fire!**

- Installation should only be carried out by a qualified electrician!

- Disconnect power source!
- Ensure device cannot be switched on!
- Check absence of voltage!
- Earth and bypass
- Cover or shield any adjacent live components



## 4. Installation

### Installation instructions

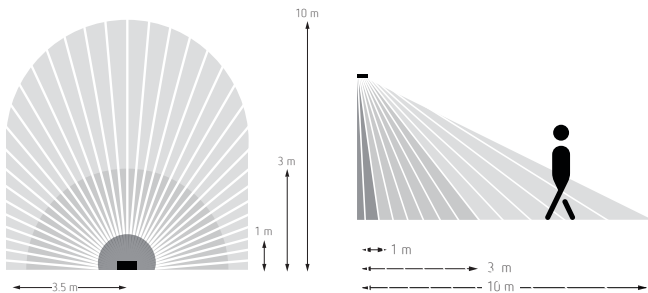


**WARNING**

**Danger of death through electric shock or fire!**

- Installation should only be carried out by a qualified electrician!

- ① Observe the recommended installation height of 1.8 m–2.5 m!

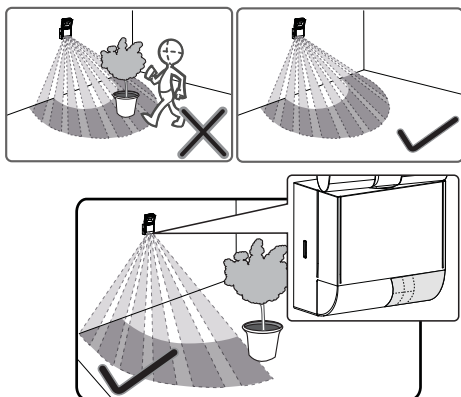


As the LED spotlight reacts to variations in temperature, avoid the following situations:

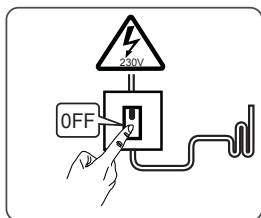
- ① Do not direct the LED spotlight at objects with highly-reflective surfaces such as mirrors etc.
- ① Do not install the LED spotlight near heat sources, such as heating outlets, air conditioning systems, lamps etc.

① Do not direct the LED spotlight at objects that move in the wind, such as curtains, large plants etc.

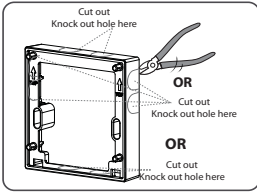
① Pay attention to the direction of motion during the test run



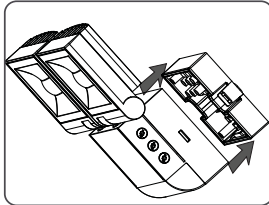
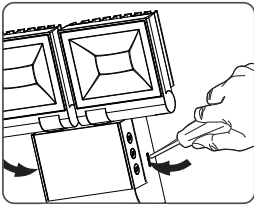
➤ Disconnect power source



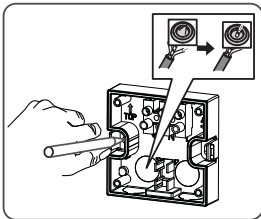
➤ Use spacer or corner bracket (optional)



- Loosen catch mechanisms with a screwdriver and remove LED spotlight from base

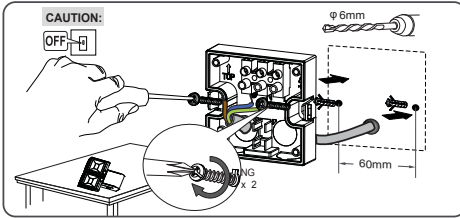


- Make marks for the holes and drill the holes

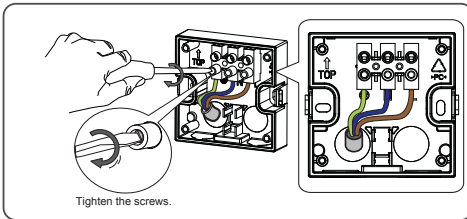


- Guide wire through the socket's seal; fix socket to the wall

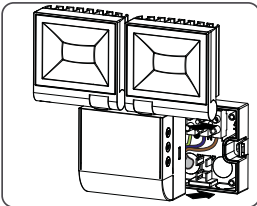




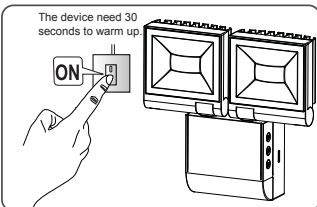
- Fix socket to wall, connect the individual wires to the appropriate terminal and tighten screws



- Place and engage the LED spotlight on the base



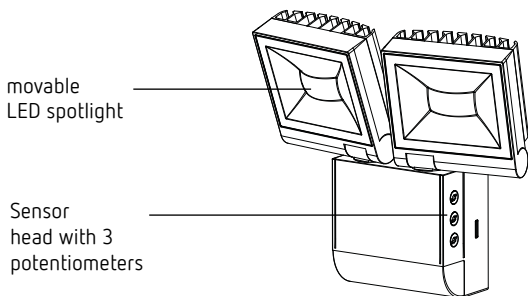
- Connect LED spotlight to mains



ⓘ The detector needs approx. 40 s of preheating time.

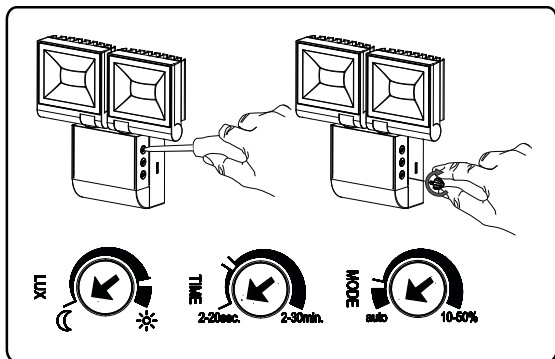


## 5. Description



The LED spotlight has 3 potentiometers for setting time (min), brightness (lux), and function mode.

## 6. Aligning the LED spotlight



Ⓛ Settings via poti are taken after 15 s

## Setting the brightness (LUX)



- Turn the potentiometer towards „Moon“; the LED spotlight only switches on when it is relatively dark.
- Turn the potentiometer towards „Sun“; the LED spotlight switches on when it is relatively bright
- Turn the potentiometer to „Sun“, and the device works independent of brightness

## Setting the time (TIME)



- Set the potentiometer to the desired time (2 s – 30 min)

## Function mode (MODE)

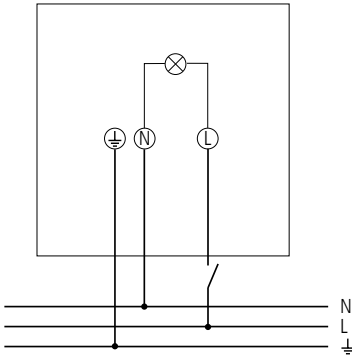


- Turn the potentiometer to „auto“; the LED spotlight switches on when there is motion in the dark
- Set Potentiometer to „10 %“ : LED spotlight switches to the set dimming value when dark
- (10 % – 50 %) for for movement to 100 %.

## Manual operation

The lighting can be switched on manually via a circuit breaker button.

- ① A circuit breaker button must be connected
- ① Function only possible at night

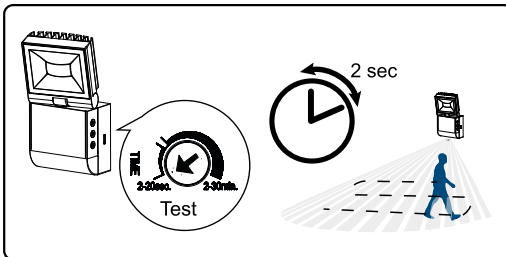


- Quickly confirm Circuit breaker 2 x (within 2 s)
  - The lighting remains switched on for 6 hours.
- To switch off the lighting and return to auto mode, press the circuit breaker briefly (within 2 s)
- If the circuit breaker is pressed x2 during this six second turn-on time, the lighting is switched on again for 6 hours.

## 7. Walking test

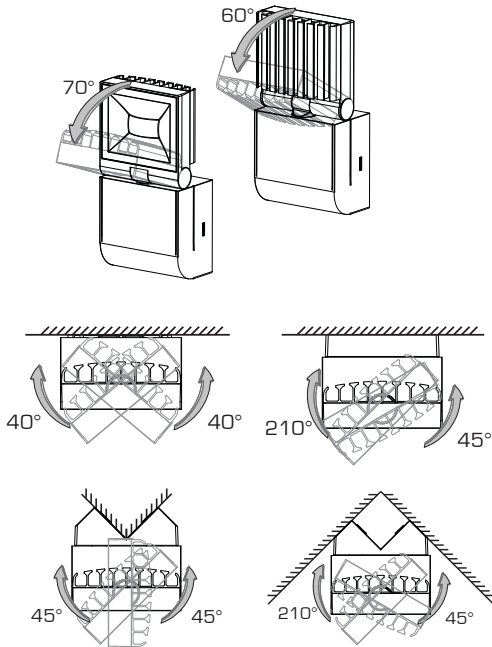
The walking test is used to test the detection area and to restrict it if necessary.

- Set potentiometer „brightness“ to „sun“.
  - Set the time potentiometer (TIME) to „test“.
    - The motion detector now always reacts to movements (independent of brightness).
  - Walk through the detection area at a right angle. After the motion detector has detected a movement, it switches on for 2 s.
- ① Pay attention to the direction of motion during the test.

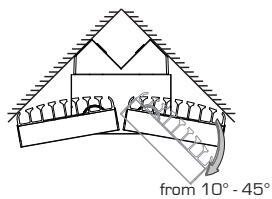
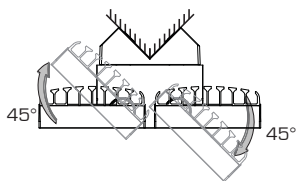
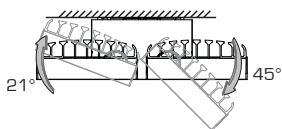
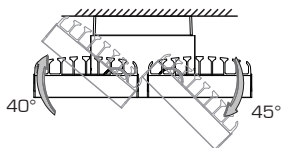
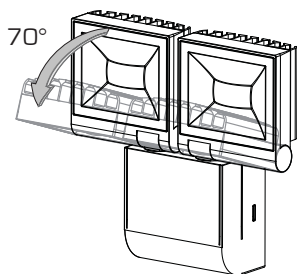


## 8. Aligning the LED spotlight

### theLeda S10

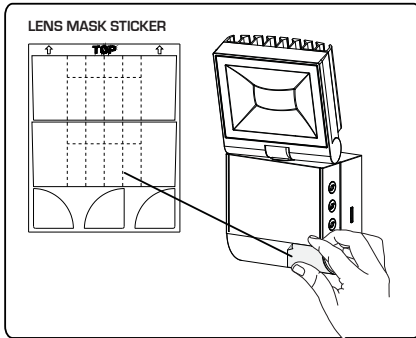


# theLeda S20



## 9. Limiting the detection area

- Use enclosed stickers to adjust the motion detector to the desired detection area.
- Remove the desired part of the cover clip with scissors.
- Then stick to the lens.



## 10. Technical Data

Operating voltage:	230 V $\pm$ 10 %
Frequency:	50 – 60 Hz
Consumption with light On:	10 W / 2 x 10 W
Standby output:	0.4 W
Colour rendering index:	> 80
Service life:	L70/B50 / 50.000 h
Protection rating:	IP 55 in accordance with EN 60529
Protection class:	I in accordance with EN 60598-1
Operating temperature:	-20 °C ... +45 °C
Brightness setting range:	2 – 200 lx / $\infty$ lx
Duty cycle range:	2 s – 30 min
Detection angle:	180°
Detection area: lateral: frontal:	max. 10 m max. 4 m
Colour temperature / LED output (luminous flux) / energy efficiency class:	1020931 – 1020934: 3000 K / 770 lm (2 x 770 lm) / A 1020921 – 1020924: 4000 K / 840 lm (2 x 840 lm) / A+
Mass/dimensions:	1020921+1020922: 7,64 kg/ 80 x 160 x 50 mm 1020923+1020924: 7,87 kg/ 167 x 160 x 50 mm 1020931+1020932: 7,64 kg/ 80 x 160 x 50 mm 1020933+1020934: 7,87 kg/ 167 x 160 x 50 mm





# 11. Contact

Theben AG  
Hohenbergstr. 32  
72401 Haigerloch  
GERMANY  
Phone +49 7474 692-0  
Fax +49 7474 692-150

## Hotline

Phone +49 7474 692-369  
hotline@theben.de

**Addresses, telephone numbers, etc.**  
**[www.theben.de](http://www.theben.de)**

