

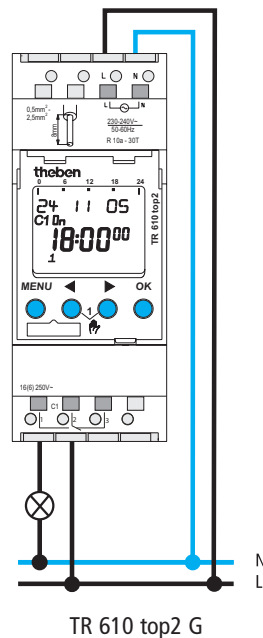
# theben

## TR

### TR 610 top2 G 610 0 110

- ⓐ **Montage- und Bedienungsanleitung** 1  
 Schaltuhr für Kleinlasten
- ⓑ **Notice de montage et d'utilisation** 13  
 Horloge programmable pour faibles charges
- ⓒ **Istruzioni per il montaggio e per l'uso** 25  
 Timer per carichi minimi
- ⓓ **Montage- en bedieningshandleiding** 37  
 Schakelklok voor kleine lasten
- ⓔ **Assembly and operating instructions** 49  
 Time switch for small loads

309346 03

**GB**


## Contents

Basic advice	51
Screen display and keys/Operating principle	52
Menu overview	53
Connection/assembly	54
Initial start-up	55
Menu item <b>PROGRAM</b>	
Reprogram switching time	56
Change switching time	57
Menu item <b>MANUAL</b>	
Manual and permanent switching	58
Menu item <b>OPTIONS</b>	
PIN code	58
Memory card OBELISK top2, RESET	59
Technical data	60
Service address/Hotline	60

## Basic advice



### WARNING

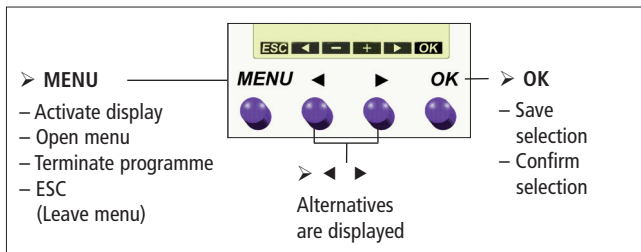
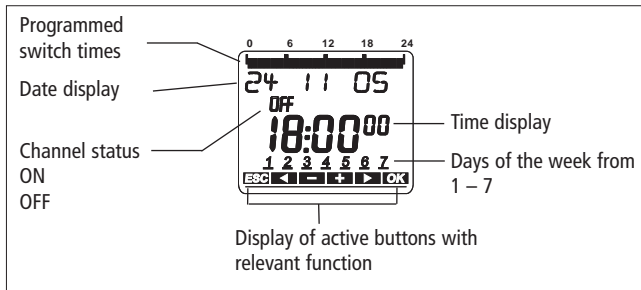
**Danger of death through electric shock or fire!**

➤ Installation should only be carried out by professional electrician!

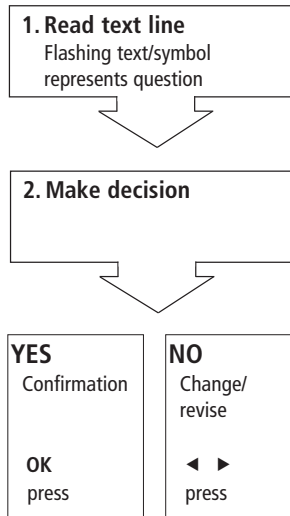
GB

- The device is designed for installation on DIN top hat rails (in accordance with EN 60715)
- Corresponds to type 1 STU in accordance with IEC/EN 60730-2-7, designed for use in normal environment
- Power reserve (10 years) is reduced with memory card inserted (in battery mode)
- **Designated use:**  
The time switch is used to control tasks in small load applications  
For use only in closed, dry rooms  
Suitable for switching SELV (Safety Extra-Low Voltage) devices
- **Disposal**  
Dispose of equipment in an environmentally-friendly manner

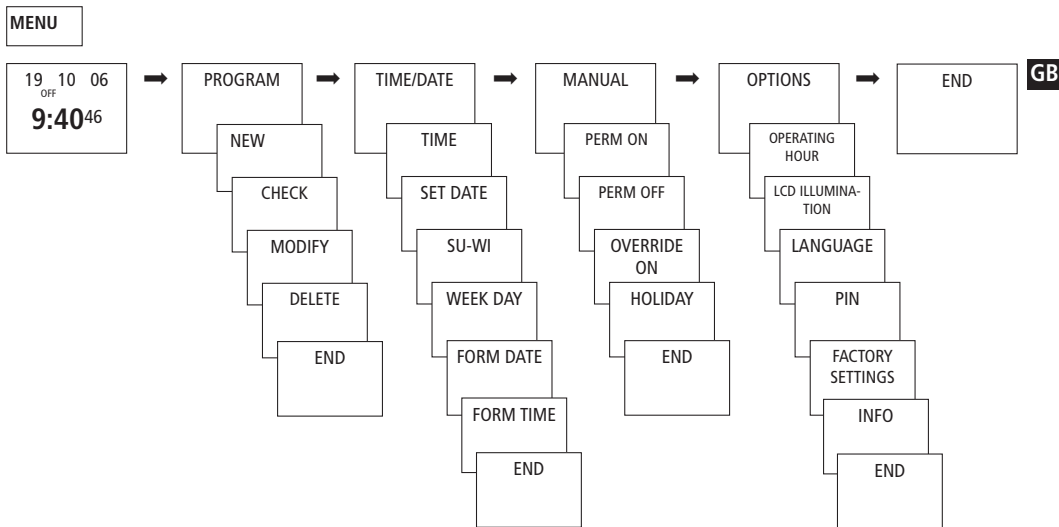
## Screen display and keys



## Operating principle



## Menu overview



## Connection/installation



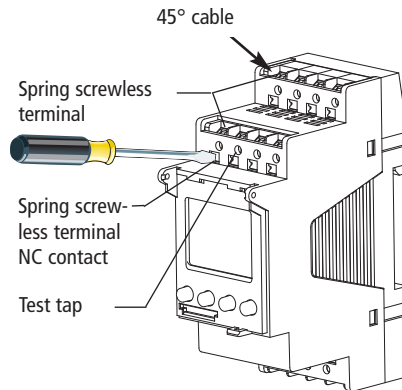
### WARNING

#### Warning, danger of death through electric shock!

- Must be installed by professional electrician!
- Disconnect power source.
- Cover or shield any adjacent live components.
- Ensure device cannot be switched on!
- Check power supply is disconnected!
- Earth and bypass!

### Connect cable

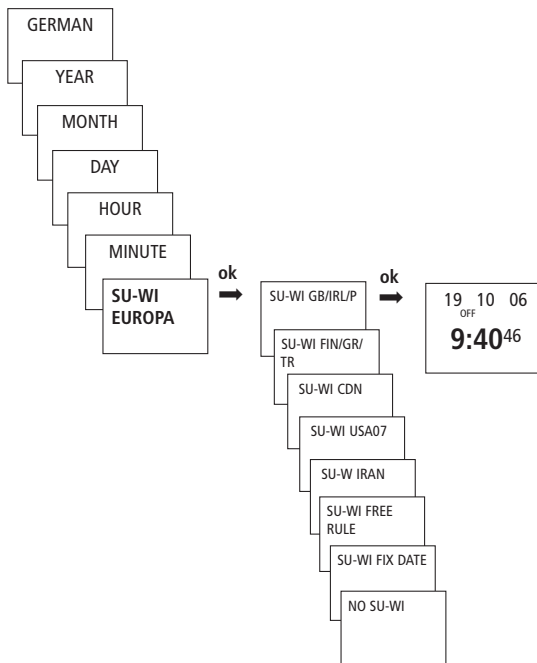
- Strip cable by 8 mm (max. 9).
- Insert cable at 45° in the open terminal (2 cables per terminal is possible).
- Only for flexible wiring: Press screwdriver downwards to open spring screwless terminal.



## Initial start-up (see fig.)

### Set date, time and summer-/winter time rule

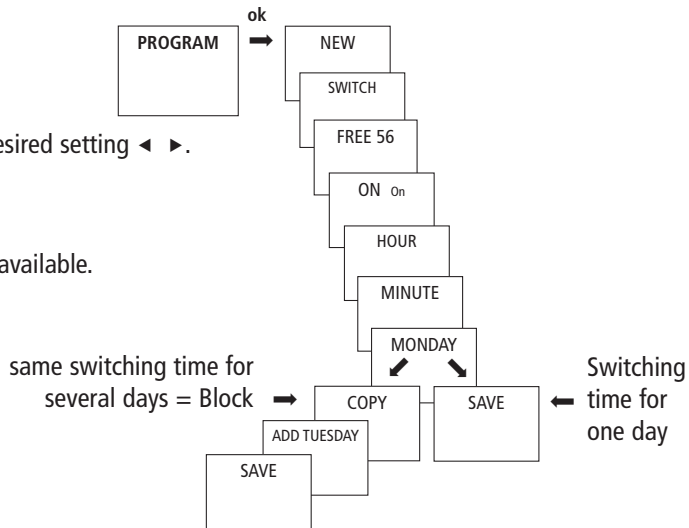
- Press desired button and follow on-screen instructions.



## Reprogram switching time (see fig.)

- Press **MENU**.
- Confirm with **OK** or select desired setting ◀ ▶.
- Reconfirm with **OK**.

You have 56 memory locations available.

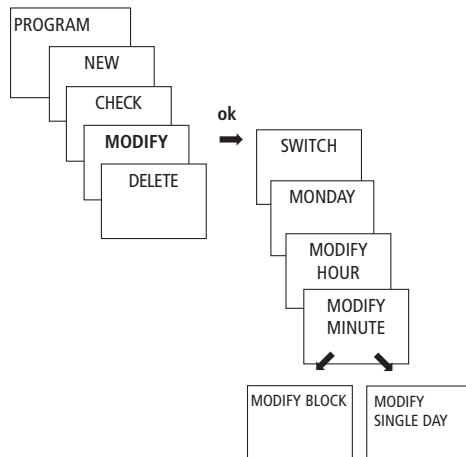




## Change/delete switching time (see fig.)

- Press **MENU**.
- Confirm with **OK** or select desired setting ◀ ▶.
- Reconfirm with **OK** .

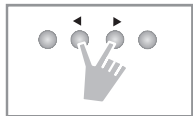
You can either change or delete a block, i.e. a switching time copied for several days (e.g. Mon-Fri) or a single switching time.



GB

## Manual and permanent switching

Manual and permanent switching can be selected by using menu option **MANUAL** or (in the automatic display) via a combination of buttons (see fig.).



### Activate manual switching

- Quickly press both buttons simultaneously.

### Activate permanent switching

- Press both buttons simultaneously for 2 seconds.

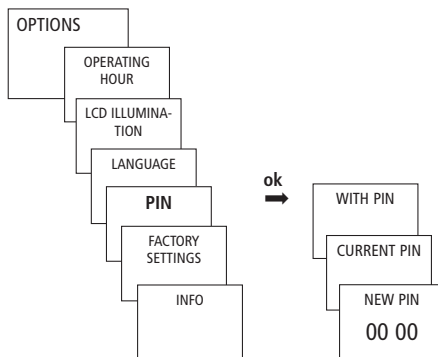
### Cancelling manual/permanent switching

- Press both buttons simultaneously.

## PIN code

The **PIN code** is set in the menu under **OPTIONS** (see fig.).

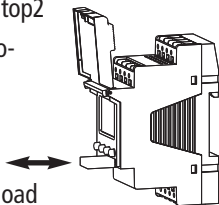
If you have lost the PIN call the Theben Hotline.



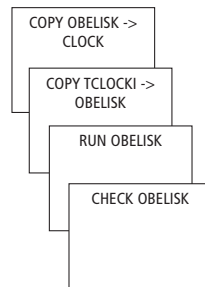
## Memory card OBELISK top2

### Use memory card

- Insert memory card in the time switch.
- Request saved switch timings, read to/from the time switch or start Obelisk program.
- Memory card OBELISK top2 (No. 9070404) after Programming etc. remove and store in cover.



Avoid mechanical overload or contamination caused by other storage/transport.



GB

## RESET

- Press the 4 buttons simultaneously.

You can choose between **KEEP PROGRAM** and **DELETE PROGRAM**.

## Technical data

- Nominal voltage: 230–240 V~, +10 %/-15 %
- Frequency: 50-60 Hz
- Power consumption: typ. 8 VA
- Switching output: switching of choice of phase is permitted
- Contact: suitable for for switching smallest loads and SELV
- Type of contact: contact  $\mu$
- Contact material: AgNi 90/10-htv
- Switching capacity max.: 16 A, 250 V~,  $\cos \varphi = 1$ ;  
2 A, 250 V~,  $\cos \varphi = 0.6$
- Switching capacity min.: < 1 mA/< 1 V
- Shortest switching time: 1 minute
- Accuracy:  $\leq \pm 0,25$  s/day at +25 °C
- Power reserve: 10 years at 20 °C
- Permissible ambient temperature: -30 °C ... +55 °C
- Protection class: II in accordance with EN 60730-1  
for designated installation
- Protection rating: IP 20 in accordance with EN 60529

- Pollution degree: 2
- Rated impulse withstand voltage: 4 kV

## Service address/Hotline

### Service address

Theben AG  
Hohenbergstr. 32  
72401 Haigerloch  
GERMANY  
Phone +49 7474 692-0  
Fax: +49 7474 692-150

### Hotline

Phone+49 7474 692-369  
Fax: +49 7474 692-207  
hotline@theben.de

**Addresses, telephone numbers etc.**  
**www.theben.de**