

TERMINA

TR 611 top2

TR 622 top2

611 0 102

622 0 102

GB Assembly and
operating instructions

Time switch

1

E Instrucciones de montaje
y de uso

Interruptor horario

15

P Manual de instruções
e de montagem

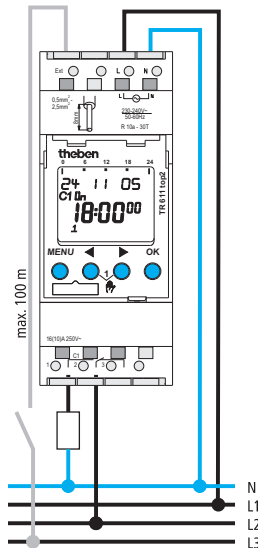
Temporizador

29

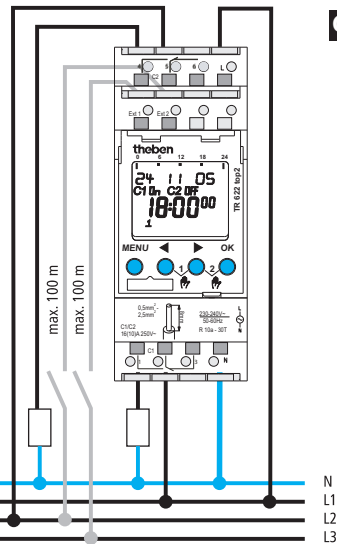
D Montage- und
Bedienungsanleitung

Schaltuhr

43



TERMINA TR 611 top2



TERMINA TR 622 top2



Current connection required for smooth zero-crossing switch operation
(see connection diagram)!

Contents

Basic advice	3
Screen display and keys/Operating principle	4
Menu overview	5
Connection/assembly	6
Initial start-up	7
RESET	10
Menu item PROGRAM	
Reprogram switching time	8
Change/delete switching time (applies also for pulse and cycle)	9
Pulse programming	10
Cycle programming	11
Menu item MANUAL	
Manual and permanent switching	12
Menu item OPTIONS	
PIN code	12
External input	13
Memory card OBELISK top2	13
Technical data	14
Service address/Hotline	14



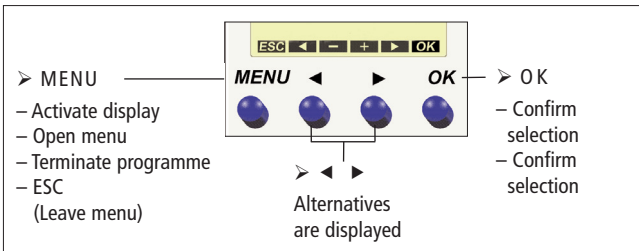
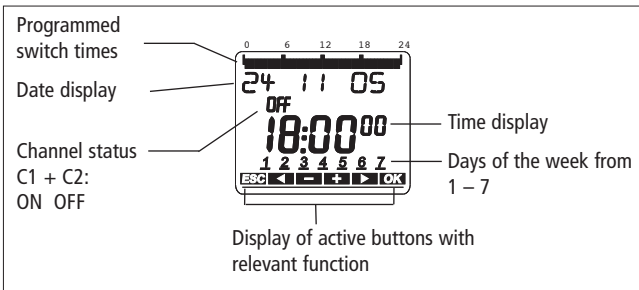
WARNING

Danger of death through electric shock or fire!

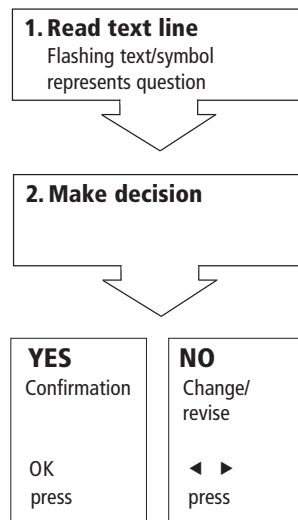
- Installation should only be carried out by professional electrician!

- The device is designed for installation on DIN top hat rails (in accordance with EN 60715)
- Corresponds to type 1 BSTU in accordance with IEC/EN 60730-2-7
- Power reserve (10 years) is reduced with memory card inserted (in battery mode)
- **Designated use:**
The timer is used for lighting, air-conditioning, flushing etc. .
- For use only in closed, dry rooms
Do not use on safety devices, e.g. escape route doors, fire safety equipment etc.
- **Disposal**
Dispose of equipment in an environmentally-friendly manner

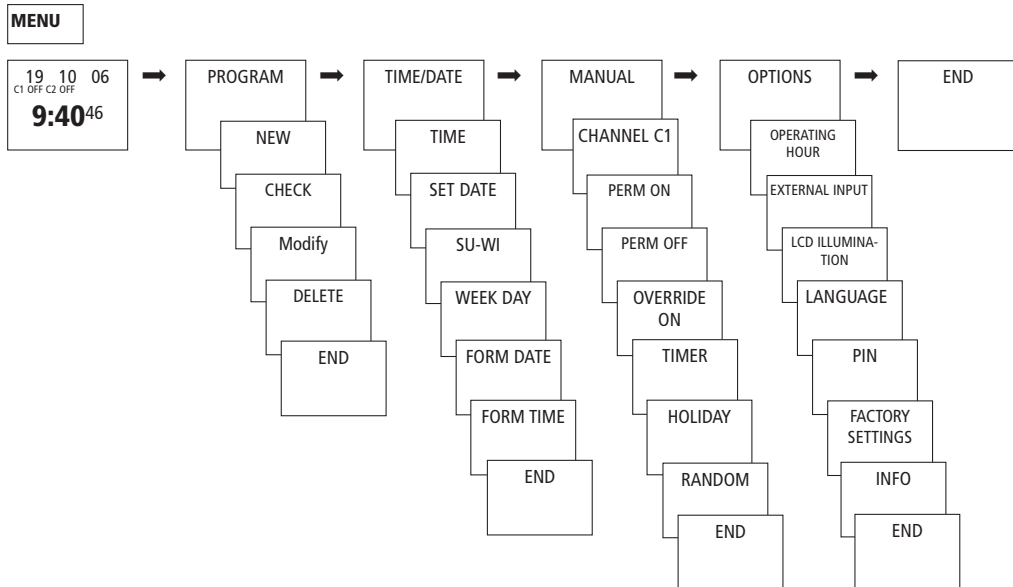
Screen display and keys



Operating principle



Menu overview



Connection/installation



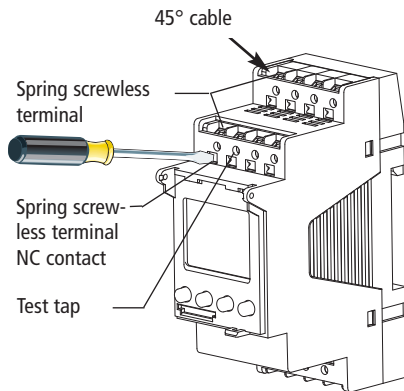
WARNING

Warning, danger of death through electric shock!

- Must be installed by professional electrician!
- Disconnect power source.
- Cover or shield any adjacent live components.
- Ensure device cannot be switched on!
- Check power supply is disconnected!
- Earth and bypass!

Connect cable

- Strip cable by 8 mm (max. 9).
- Insert cable at 45° in the open terminal (2 cables per terminal is possible).
- Only for flexible wiring: Press screwdriver downwards to open spring screwless terminal.

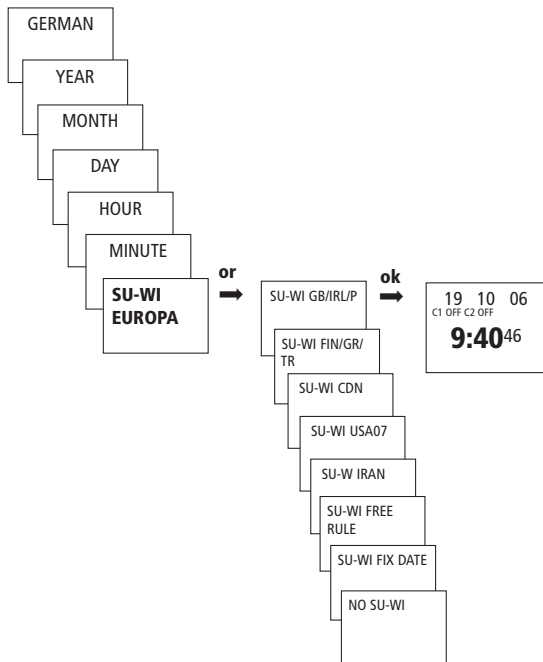


Initial start-up

(see fig.)

Set date, time and summer/winter time rule

- Press desired button and follow on-screen instructions.

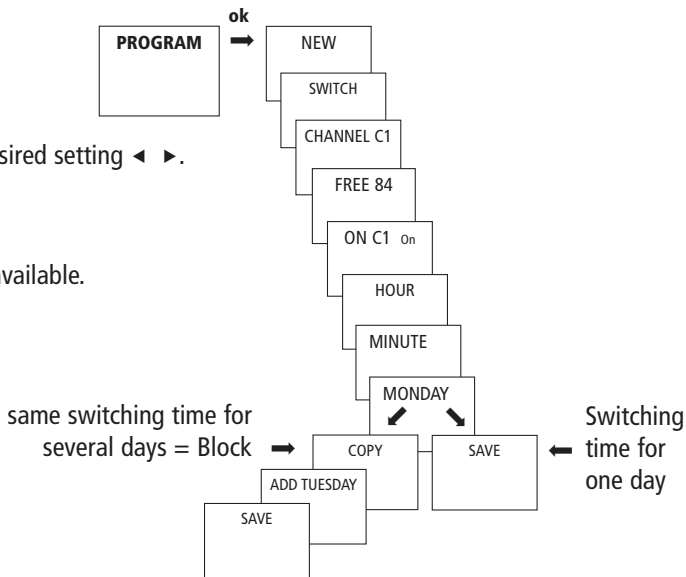


Reprogram switching time

(see fig.)

- Press **MENU**.
- Confirm with **OK** or select desired setting ◀ ▶.
- Reconfirm with **OK**.

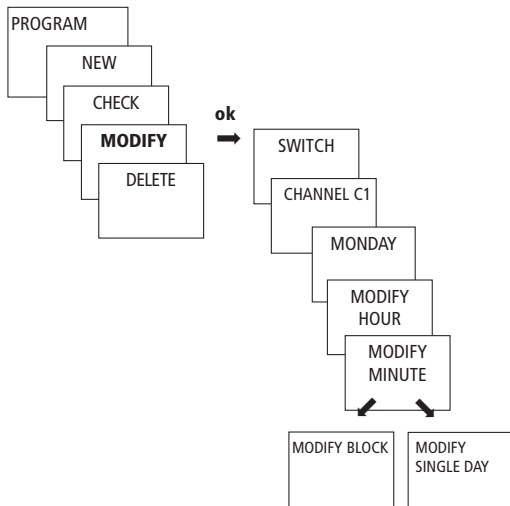
You have 84 memory locations available.



Change/delete switching time (applies also for pulse and cycle) (see fig.)

- Press **MENU**.
- Confirm with **OK** or select desired setting ◀ ▶.
- Reconfirm with **OK**.

You can either change or delete a block, i.e. a switching time copied for several days (e.g. Mon-Fri) or a single switching time.



Pulse programming

(see fig.)

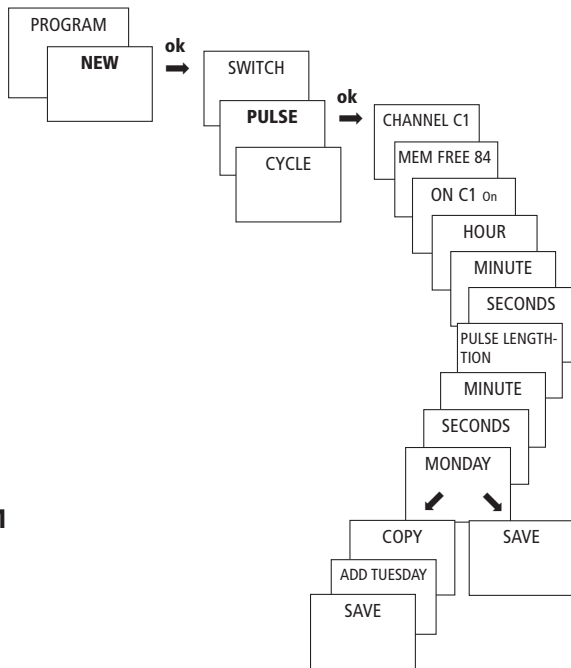
(for pause signals, air-conditioning, flushing etc.)

- Press **MENU**.
- Confirm with **OK** or select desired setting ◀ ▶.

RESET

- Press the 4 buttons simultaneously.

You can choose between **KEEP PROGRAM** and **DELETE PROGRAM**.

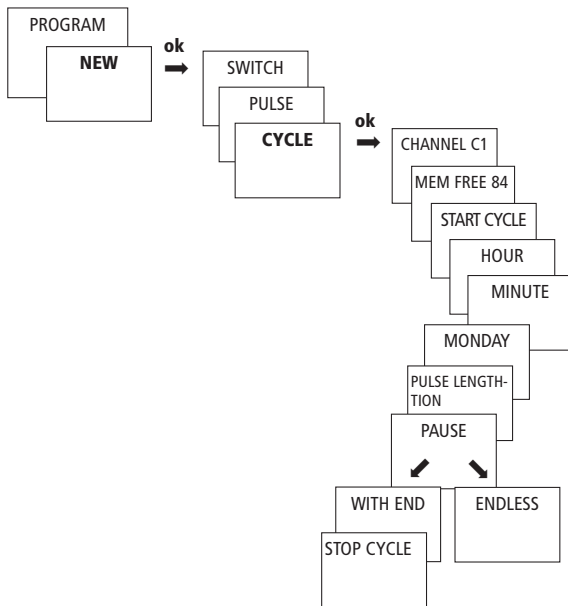


Cycle programming

(see fig.)

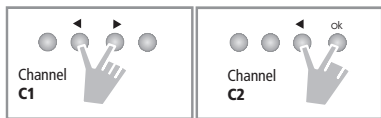
(with cyclical time functions,
e. g. water treatment etc.)

- Press **MENU**.
- Confirm with **OK** or select the desired setting with ◀ ▶.



Manual and permanent switching

Manual and permanent switching can be selected by using menu option **MANUAL** or (in the automatic display) via a combination of buttons (see fig.) .



Activate manual switching

➤ Quickly press both buttons simultaneously.

Activate permanent switching

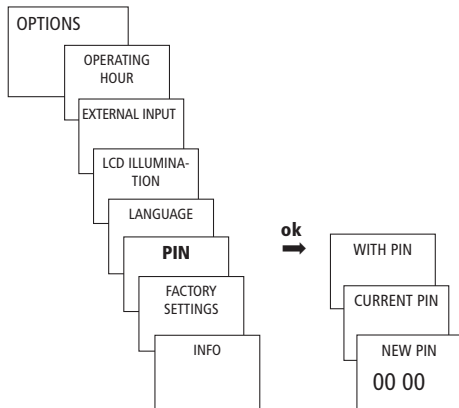
➤ Press both buttons simultaneously for 2 sec.

Cancelling manual/permanent switching

➤ Press both buttons simultaneously.

PIN code

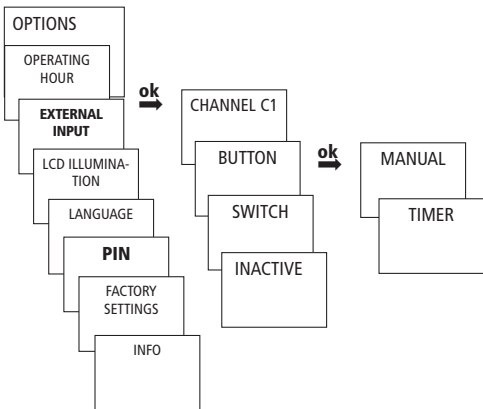
The **PIN code** is set in the menu under **OPTIONS** (see fig.). If you have forgotten the PIN call the Theben Hotline.



External input

The **EXTERNAL INPUT** can be set using **OPTIONS** menu entry (see fig.).

- Use switch without glow lamp path.

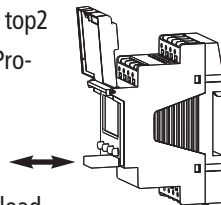


Memory card OBELISK top2

GB

Use memory card

- Insert memory card in the timer.
- Request savedswitch timings, read to/from the timer or start Obelisk program.
- Memory card OBELISK top2 (No. 907 0 404) after Programming etc. remove and store in cover.



Avoid mechanical overload or contamination caused by other storage/transport.

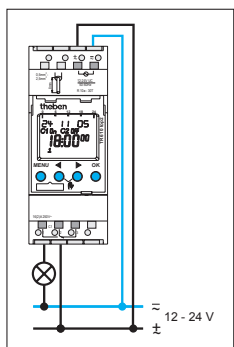
GB Special voltage TR top2 24 V

610 4 100 622 4 100
611 4 100 641 4 300
611 4 300 642 4 300
612 4 100

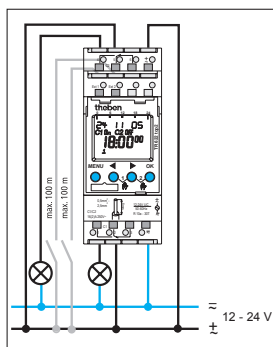


The technical data and the section on the "electrical connection" of 230 V devices (see operating instructions) do **not** apply to devices with special voltage.

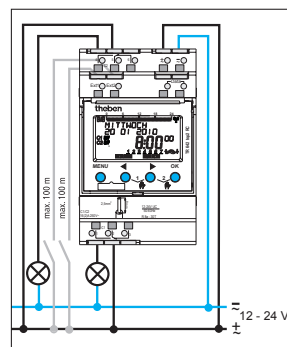
Electrical connection



TR 610 top2 24 V



TR 622 top2 24 V



TR 642 top2 RC 24 V

The devices are designed for switching mains and low voltage (SELV, PELV, FELV).

TR 612 top2 24 V, TR 622 top2 24 V, TR 641 top2 RC 24 V, TR 642 top2 RC 24 V



With these devices the type of low voltage must correspond to low voltage type of the supply voltage (SELV = SELV, PELV = PELV, FELV = FELV).

If the switch output is 230 V, the time switch can be operated using low function voltage but not SELV as supply voltage.

➤ Lay the control cable separately from the load power.

TR 610 top2 24 V, TR 611 top2 24 V, TR 611 top2 RC 24 V

The devices are approved for switching SELV and mains voltage.

External outputs

The external outputs are designed for operating voltage of 12-24 V AC and DC and not for 230 V.

310 357

Technical data

Permissible operating voltage:	12 V–24 V / 50–60 Hz +10 % –15 %, 12 V–24 V DC +10 % –15 %
Switching capacity:	16 A, 250 V~ $\cos \varphi = 1$; 2 A, 250 V~ $\cos \varphi = 0.6$
Incandescent lamp load, halogen load:	1400 W at 230 V or 6 A
Flashlight (EB) 230 V:	180 W
Compact lamp (EB) 230 V:	7 x 7 W, 6 x 11 W, 5 x 15 W, 5 x 20 W, 4 x 23 W
Fluorescent lamps, parallel-corrected 230 V:	1 x 58 W / 7 μ F, 2 x 36 W (4.5 μ F each), max. 12 μ F
Halogen metal halide lamps 230 V:	1 x 70 W (12 μ F)
Standby output min.	Power consumption typ.
0.3 W	1.0 W (TR 612 top2 24 V, TR 622 top2 24 V)
0.3 W	0.7 W (TR 610 top2 24 V, TR 611 top2 24 V)
0.9 W	1.3 W (TR 611 top2 RC 24 V)
1.5 W	2.5 W (TR 642 top2 RC 24 V)
1.5 W	2.0 W (TR 641 top2 RC 24 V)
Mode of operation:	Type 1 BSTU in accordance with EN 60730-1
Pollution degree:	2
Rated impulse voltage:	4 kV
Protection class:	II for supply with FELV and/or mains switching III for supply with SELV and switching of SELV
Protection rating:	IP 20 in accordance with EN 60529
Power reserve:	8 years at 20 °C

Serviceadresse

Theben AG
Hohenbergstr. 32
72401 Haigerloch
DEUTSCHLAND
Fon +49 (0) 74 74/6 92-0
Fax +49 (0) 74 74/6 92-150

Hotline

Fon +49 (0) 74 74/6 92-369
Fax +49 (0) 74 74/6 92-207
hotline@theben.de
Addresses, telephone numbers etc.
www.theben.de